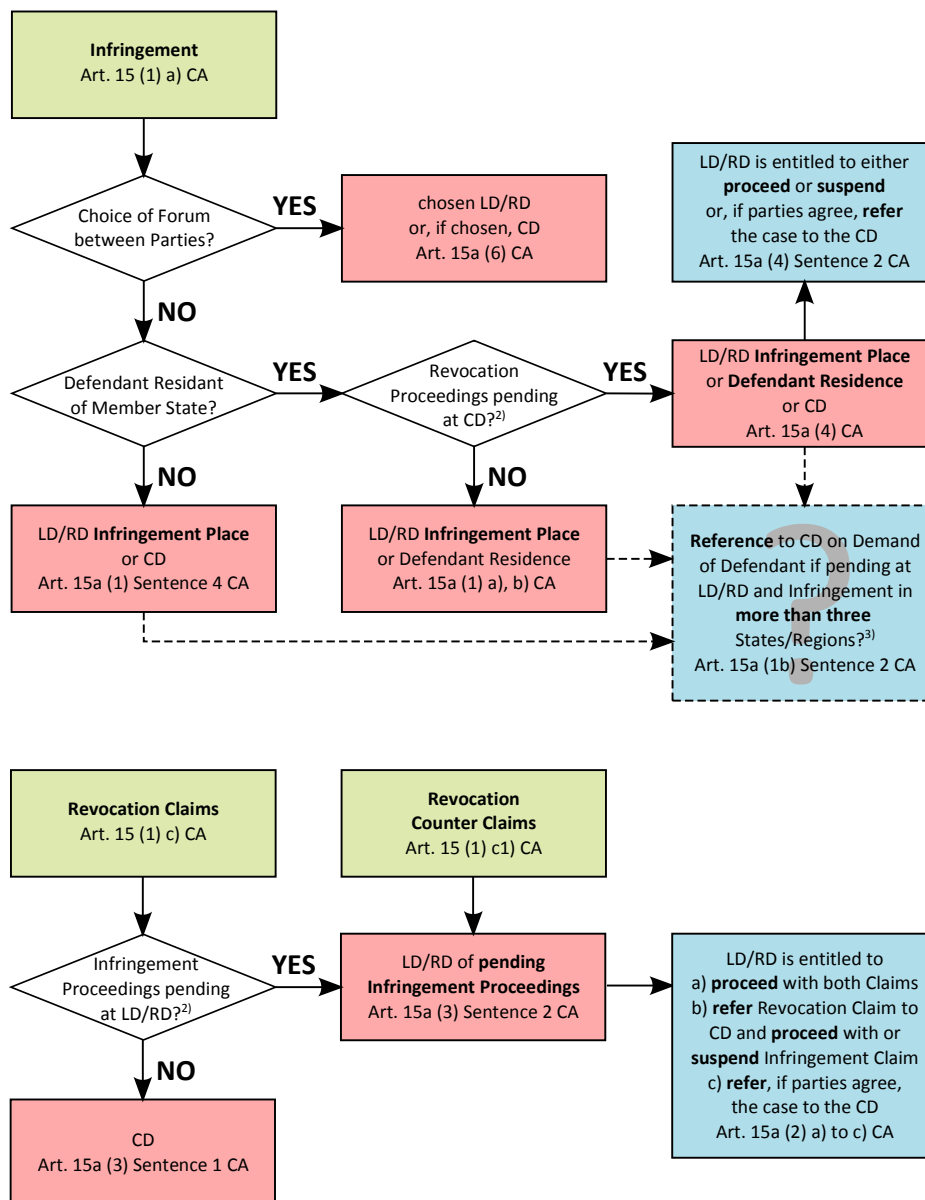


## Competence of the Divisions of the Unified Patent Court



LD = Local Division, RD = Regional Division, CD = Central Division

For Member States without an LD and not belonging to an RD, the CD is competent, Art. 15a (1) Sentence 4 CA.

<sup>1)</sup> Residence, principal place of business, place of business, Art. 15a (1) b) CA.

<sup>2)</sup> Same patent, same parties, Art. 15a (3) bzw. (4) CA.

<sup>3)</sup> Not yet clear. Art. 15a (1b) Sentence 2 CA might be deleted.